
DORFMAN

MUSEUM FIGURES, INC.

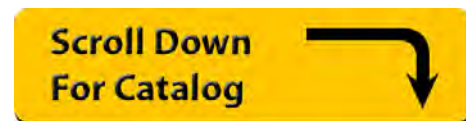
Price List & Catalog

<u>Catalog #</u>	<u>Item</u>	<u>Price</u>
1000	Realistic Figure, Customized Body starting at	\$2,695.
3000	Realistic Figure, Flexible Foam Body	2,295.
3500	Realistic Figure, Military Man (Rigid Foam Body)	2,295.
4001	Small Heelplate	35.
4002	Large Heelplate	65.
4003	Padding Shirt	75.
4005	Waist Bracket	115.
4100	ETHAFOAM® Man / Woman	1,895. †
4150	Economy ETHAFOAM® Man / Woman	1,395. *†
4300	Dress Form, medium or small	650. *†
4400	Suit Form, large 40-42 or medium 38	650. *†
4500	Classic Economy Form, adult	725. *†
4600	Classic Economy Form, child	655. *†
5000	Classic Adjustable Form, adult	875.
5015	Classic Head, oval head – large, small or child	95. †
5050	Classic Feet (pair)	130. †
5100	Classic ‘mitten’ hands (pair), Large, small, child	90. †
5200	Classic Thighs (pair)	95. †
5300	Waist Block	25.
5400	Classic Form shoulder buds (pair)	65. †
5500	Conservation Padding Shirt	80.
5800	Baby Christening Gown Form	195. †
5900	Thin Chest Mount	355. *†
6000	Classic Bust Form	275. *†
6010	Storage Hat Mount, (8”, 11”, or 15” height)	50. *†
6012	Display Hat Mount	60. *†
6015	Head Mount, oval head – large, small or child	125. †
6020	Head Mount with facial features (multiple options – see catalog)	165. †
6500	Conservation Hanger	50. †
6600	Conservation Hanger Kit	30.
6700	Conservation Hanger, Carve-Your-Own	15. ea, min. 5

March 7, 2019 Prices subject to change. Please call for quotes.
 One-year warranty, parts and labor, for defective materials and workmanship.
 Prices F.O.B. Baltimore, MD

* volume discounts apply

† additional colors available, call for price



6224 Holabird Ave., Baltimore, MD 21224 • 410.284.3248 • 410.284.3249 fax
 800.634.4873 • www.museumfigures.com • info@museumfigures.com

DORFMAN

MUSEUM FIGURES, INC.

Catalog #

Price

1000 **Realistic Figure, Customized Body** **(starting price)** **\$2,695.**



Hands and heads are of museum quality, created from a durable vinyl plastic, amazingly lifelike in appearance and texture. Hands can be chosen by client from one of our 100 existing hand molds to best suit the size of the figure, and figure's action. Fingers are bendable to accept props but must return to original cast position.

Head can be chosen by client from one of our 840+ existing head molds.

The eyes are hand made and offered in various colors.

Hair will be a 'standard' wig with slight hair implanting at the temples if needed to hide the wig line, and head will have human hair implanted eyebrows. Special implanted hair is available. Send us a picture so we can give you a quote.

Body is made of rigid Urethane foam, and customized to the position specified. Our vinyl heads and hands are attached. Price of figure is determined by complexity of work we have to do. Please call for a quote.

Arms: Arms are wooden, with joints in the elbow and shoulder can remove from the body for easy dressing, Shoulder width is adjustable. Arms are covered with padding and stockinette tubing to create a smooth surface.

Figure installation: leg has an interior square metal tube from the heel to the knee and slides down over a heel plate post to stand independently. Heel plate post goes through a hole in the shoe, up into the square metal tube inside the figure's leg. Heel plate is included in price (Catalog #4001 or #4002).

3000 **Realistic Figure, Flexible Foam Body** **\$2,295.**



Hands and heads are of museum quality, created from a durable vinyl plastic, amazingly lifelike in appearance and texture.

Hands can be chosen by client from one of our 100 existing hand molds to best suit the size of the figure, and figure's action. Fingers are bendable to accept props but must return to original cast position.

Head can be chosen by client from one of our 840+ existing head molds.

The eyes are hand made and offered in various colors.

Hair will be a 'standard' wig with slight hair implanting at the temples if needed to hide the wig line, and head will have human hair implanted eyebrows. Eyelashes will be glued to eyelid.

Body is our flexible foam figure made of Urethane Foam with wire and steel interior armature, bendable at the elbow, neck, waist, hip, and knee, and with a bolt-locking joint in the shoulder to 'fix' the arm in a desired pose. Bending points are reinforced to help the figure maintain its position. Arms detach at shoulder for easy dressing. Realistic head and hands are attached to the body and can be removed for easy

dressing. Figure is shipped without clothing.

Body measurements: See sizing chart on website www.museumfigures.com click on "sizes" at the bottom of the realistic figures page.

Figure installation: leg has an interior square metal tube from the heel to the knee and slides down over a heel plate post to stand independently. Heel plate post goes through a hole in the shoe, up into the square metal tube inside the figure's leg. Heel plate is sold separately, Catalog #4001 or #4002.

Optional external Waist Bracket stand (Catalog #4005) can eliminate the need to drill a hole in the shoe.

DORFMAN

MUSEUM FIGURES, INC.

3500

Realistic Figure, Military Man—Rigid Foam Body

\$2,295.



Hands and heads are of museum quality, created from a durable vinyl plastic, amazingly lifelike in appearance and texture. **Hands** can be chosen by client from one of our 100 existing hand molds to best suit the size of the figure, and figure's action. Fingers are bendable to accept props but must return to original cast position.

Head can be chosen by client from one of our 840+ existing head molds.

The eyes are hand made and offered in various colors.

Hair will be a 'standard' wig with slight hair implanting at the temples if needed to hide the wig line, and head will have human hair implanted eyebrows.

Eyelashes will be glued to eyelid.

Body is made of rigid Urethane foam, with our vinyl heads and hands attached. Torso is one piece from neck to waist, and the hip area is one piece from waist to thigh. The waist is a large ball and socket which allows some positioning of the figure by turning or tilting it at the waist. Legs are separate and attach to hip area with a section of 2" PVC Pipe. Right leg has posable wooden joint in thigh. A one-layer cotton T-shirt is put on the figure with. A Velcro strap at the bottom connects at the crotch to hold the shirt to the body. Figure is shipped without clothing.

Body measurements: See sizing chart on website www.museumfigures.com click on "sizes" at the bottom of the realistic figures page. Standard height is between 5'-5" and 6'.

Arms: Arms are wooden, with joints in the elbow and shoulder can remove from the body for easy dressing, and are adjustable so that client can control the shoulder width. They are covered with padding and stockinette tubing to create a smooth surface.

Figure installation: leg has an interior square metal tube from the heel to the knee and slides down over a heel plate post to stand independently. Heel plate post goes through a hole in the shoe, up into the square metal tube inside the figure's leg. Heel plate is sold as a separate item Catalog #4001 or #4002.

Optional external Waist Bracket stand (Catalog #4005) can eliminate the need to drill a hole in the shoe.

4001

Small Heel plate

\$35.



Black powder coated steel plate 5 1/2" x 2 1/2" x 3/16" thick with a 1/2" square 8" long steel post welded to the surface. This post goes up through the figure's shoe and heel, into a matching square steel tube inside the figure's leg. When used with the ETHAFOAM® Man the post goes into a sleeve that comes out the back of the calf. A 5/16" hole is drilled in each corner of the plate so that the plate can be screwed down to the floor. This heel plate can be used with the Flexible Foam Figure, Military Man

Figure, and the ETHAFOAM® Man.

4002

Large Heel plate

\$65.

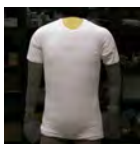


Black powder coated steel plate 1' x 1' x 3/16" thick with a 1/2" square 8" long steel post welded to the surface. This post goes up through the figure's shoe and heel, into a matching square steel tube inside the figure's leg. When used with the ETHAFOAM® Man the post goes into a sleeve that comes out the back of the calf. This heel plate can be used with the Flexible Foam Figure, Military Man Figure, and the ETHAFOAM® Man.

4003

Padding Shirt

\$75.



This padding shirt adds realistic bulk to the body, if needed to pad out to the clothing. Two white cotton T-shirts are basted together with sculptured layers of polyester padding in between. A hook-and-loop tab at the bottom connects at the crotch to hold the shirt to the body. This padding shirt can be used with both the Flexible Foam Figure and the Military Man Figure. Sizes are "standard" and "fat man."

DORFMAN

MUSEUM FIGURES, INC.

4005

Waist Bracket

\$115.



The Waist Bracket is used to give extra, external support to a figure. Primarily used on a Military Man Figure when the client does not want to drill a hole through the shoe to accept the heel plate, it is also appropriate for use with the ETHAFOAM® Man Figure. The Waist Bracket is made up of: a powder coated adjustable steel post, and a top with an ETHAFOAM® block and nylon strap that encircles the figure's waist for support. The Waist Bracket requires a heel plate (Catalog item #4001 – small, or #4002 –large), which is sold as an optional item. It is designed to fit over the heel plate's vertical 8" spike.

4100

ETHAFOAM® Man

\$1,895.

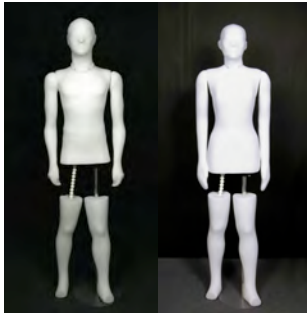


This figure has a more realistic shape and posability in the shoulders, elbows, wrist, and waist, similar to our 'Military Man' (Catalog #3500) but with the conservational quality of ETHAFOAM® to display your artifact garments with a more realistic look. It has an internal anodized aluminum pole structure and joints, posable waist, and polyester stockinette covering. This figure also includes jointed arms with hands, and a Conservation Head with facial features (Catalog #5020). The fingers are connected and cannot accept gloves. The ETHAFOAM® Man has a powder coated steel square tube coming out of the calf that fits on our heelplate (Catalog #4001 or #4002). Optional Waist Bracket (Catalog #4005) can also be used to stand the figure. Male and Female. Black, grey, and colored covers available; please call for prices.

4150

Economy ETHAFOAM® Man & Woman

\$1,395.



We have taken the realistic shape and structure of the ETHAFOAM® Man (Catalog #4100) and simplified it to create this figure. It has a one-piece torso from shoulder to hip, and the arms have flexible cable in the elbows and wrists and an easy-snap fitting at the shoulder. Also includes a Conservation Head with facial features (Catalog #5020), hands, and round silver base. The fingers are connected and cannot accept gloves. The Economy ETHAFOAM® Man/Woman is supported by an anodized aluminum pole that goes through the left leg. The foot sits in front of the pole to accept a shoe. The right leg is attached by flexible cable and can be positioned freely. Male and Female. Optional black pole and stand. Black, grey, and colored covers available; please call for prices.

4300

Dress Form, medium or small

\$650.



These forms are made of solid ETHAFOAM® with a polyester stockinette covering. They have a more realistic shape than our conservation forms and can be great solutions for a "no-frills" display of artifact garments. The Dress Form can be carved down or padded up to fit your garment. Forms mount on a 1" aluminum pole, 41" in length, and are adjustable in height. A 13" round powder coated steel stand is included in price. Optional black pole and stand. Black, grey, and colored covers available; please call for prices.

DORFMAN

MUSEUM FIGURES, INC.

4400

Suit Form, medium (38) or large (42)

\$650.



These forms are made of solid ETHAFOAM® with a polyester stockinette covering. They have a more realistic shape than our conservation forms and can be great solutions for a "no-frills" display of artifact garments. The shoulders are attached by an easy-snap fitting (beneath the covering) and are removable. Forms can be carved down or padded up to fit different sized garments. Forms mount on a 1" anodized aluminum pole, 41" in length, and are adjustable in height. A 13" round powder coated steel stand is included in price. Optional black pole and stand. Black, grey, and colored covers available; please call for prices.

4500

Classic Economy Form, adult male or female

\$725.



Made from solid ETHAFOAM® plastic foam and consists of hip block, chest block, arms and stand. Form is easily padded up or carved down for shape, size, and height. Arms have flexible cable in the elbows, and an easy-snap fitting at the shoulder. Padding and cover are 100% polyester. Additional reinforcement provided by stainless steel screws, nickel-plated T-pins, or nylon tacks. Black, grey, and colored covers available; please call for prices.

Stand: black powder coated steel, comes with three 1" diameter anodized aluminum poles (available in silver or black). The 48" long pole goes through the center of the hip and chest blocks for center mount. For trouser mount, the 34" (medium) pole goes in the off-set leg hole, and the 20" (short) pole goes in the waist. Plastic collar with thumbscrew allows for fine adjustment of overall height and distance between hip and chest.

Kit of polyester padding, allen wrench and t-pins is included.

Neck: Choose from high neck, which can accept an optional head (Catalog #5015) or flat neck, as shown.

Optional items: oval head # 5015; feet # 5050; mitten hands #5100; waist block #5300; shoulder buds #5400; padding shirt #5500 and stockinette coverings #7000, #7005, #7050, #7200.

4600

Classic Economy Form, child

\$655.

Made from solid ETHAFOAM® plastic foam and consists of hip block, chest block, arms and stand. Form is easily modified for shape, size, and height. Arms have flexible cable in the elbows, and an easy-snap fitting at the shoulder. Padding and cover are 100% polyester. Black, grey, and colored covers available; please call for prices.

Stand: black powder coated steel, comes with three 1" diameter anodized aluminum poles (available in silver or black). Use the small pole in the waist, the medium pole in the off-set leg hole. For center pole mount, use the longest pole. Plastic collar with thumbscrew allows for fine adjustment of overall height and distance between hip and chest.

Kit of polyester padding, allen wrench and t-pins is included.

Neck is high enough to accept an optional head (Catalog #5015)

Optional items: oval head # 5015; feet # 5050; mitten hands #5100; waist block #5300; #5500 and stockinette coverings #7000, #7005, #7050, #7200.

DORFMAN

MUSEUM FIGURES, INC.

5000

Classic Adjustable Form, adult male or female

\$875.



Made from solid ETHAFOAM® plastic foam and consists of hip block, chest block, arms and stand. Form is easily modified for shape, size, and height. Adjustable interior construction allows you to easily change the width of the shoulder, waist and hip to fit different sized clothing. Arms have flexible cable in the elbows, and an easy-snap fitting at the shoulder. Padding and cover are 100% polyester. Additional reinforcement provided by stainless steel screws, nickel-plated T-pins, or nylon tacks. Black, grey, and colored covering *options*; please call to discuss.

Stand: black powder coated steel, comes with three 1” diameter anodized aluminum poles (available in silver or black). The 48” long pole goes through the center of the hip and chest blocks for center mount. For trouser mount, the 34” (medium) pole goes in the off-set leg hole, and the 20” (short) pole goes in the waist. Plastic collar with thumbscrew allows for fine adjustment of overall height and distance between hip and chest.

Kit of polyester padding, allen wrench and t-pins is included.

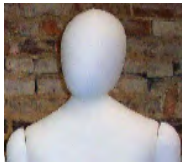
Neck: Choose from flat neck or high neck, which can accept an optional head (Catalog #5015), as shown.

Optional items: oval head # 5015; feet # 5050; mitten hands #5100; thigh #5200, waist block #5300; shoulder buds #5400; padding shirt #5500 and stockinette coverings #7000, #7005, #7050, #7200.

5015

Classic Head, oval head – large, small, or child

\$95.



These heads are made of ETHAFOAM®, padded with polyester padding, and covered with a polyester stockinette. They fit on to the “high” neck of our Classic Forms. We generally match the head size to the chest size that you order: large, small, or child. The heads are featureless to ensure ethnic and gender anonymity for a wide range of artifact headwear. Black, grey, and colored covers available; please call for prices.

5050

Classic Feet (pair)

\$130.



The feet are carved from ETHAFOAM® and covered with 100% polyester padding and a polyester stockinette cover to match the Classic Forms. The feet go from the bottom of the foot to just below the knee and are articulated at the instep to accommodate a range of heel heights. Each foot attaches underneath the hip by means of a flexible plastic cable and hangs so it does not put pressure on the shoes. Black, grey, and colored covers available; please call for prices.

5100

Classic ‘mitten’ hands (pair)

\$90.



A simple hand shape is carved out of ETHAFOAM® and covered with padding and polyester stockinette. Hands attach to the forearms of the Classic Adjustable and Economy Forms by way of flexible plastic cable, and can be retrofitted onto existing arms. Fingers are not separated and cannot accept a glove. Black, grey, and colored covers available; please call for prices.

DORFMAN

MUSEUM FIGURES, INC.

5200

Classic Thighs

\$95.



The thighs are additional pieces that fill in around the area of plastic cable noted in Catalog# 5050 (Classic Feet). They can be used when filling out pant legs for a more realistic look. Covered with padding and polyester stockinette. Black, grey, and colored covers available; please call for prices.

5300

Waist Block

\$25.



This block of ETHAFOAM® fits onto the center pole to fill in the space between the chest and hip blocks of our Classic Forms. It comes as a 2-inch thick rectangular block with a hole drilled in the correct place and an adjustable plastic collar to position it along the 1" diameter aluminum pole. A trim line that matches the original waist is marked for your convenience. You can carve it larger to fit your garment. No covering included.

5400

Classic shoulder buds (pair)

\$65.



ETHAFOAM® 'buds' can take the place of arms to create the look of shoulders. Sometimes these buds are preferred over arms, such as in the case of a dress with shoulder straps where full arms may detract from the display of the garment. Covered with padding and polyester stockinette. Black, grey, and colored covers available; please call for prices.

5500

Conservation Padding Shirt

\$80.



This padding shirt adds bulk to the body if needed to pad out to the clothing. Two white cotton T-shirts are basted together with sculptured layers of conservation quality polyester padding in between. A hook-and-loop tab at the bottom connects at the crotch to hold the shirt to the body. This padding shirt can be used with any of the Conservation Forms.

5800

Baby Christening Gown Form

\$195.



Originally designed for mounting christening gowns, this form is the size of a newborn baby. It is made of ETHAFOAM® with a polyester stockinette covering, and mounts on a 6-3/4" diameter powder coated steel round base, and a 1" diameter anodized aluminum post. The height is adjustable by sliding the form on the post, or by cutting the post down to a desired size. Black, grey, and colored covers available; please call for prices.

DORFMAN

MUSEUM FIGURES, INC.

5900

Thin Chest Mount

\$355.



Aimed to address shallow display cases, this form is only three inches thick from front to back. It is made of ETHAFOAM® with a polyester stockinette covering. Mount it on a floor stand, table top stand, or on the wall for a 'floating' look. There are two widths and both include 'shoulder pads' to fit larger square-cut garments like football or hockey jerseys.

Black, grey, and colored covers available; please call for prices.

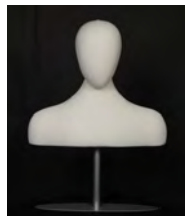
Small: 17"x14"x4" Large: 21"x14"x4"

Standard tabletop setup with a 24" pole, 28" total height. With oval stand or 6.75" round stand. Floor mount with 41" pole, total height of 45" with 13" round stand.

6000

Classic Bust Form

\$275.



If you need more than a head mount but not a full chest, this could be your answer. It uses our Conservation Head (item #5015), which sits atop a neck and shoulders that are the same size as our Small Classic Economy Form. The Classic Bust Form offers a simple option for display of long necklaces, scarves, and other draped neckwear. It is made of ETHAFOAM® with a polyester stockinette covering. Black, grey, and colored covers available; please call for prices. Comes standard with powder coated steel oval base and a 24" pole.

6010

Storage Hat Mount - 8", 11", or 15" height

\$50.



The Storage Hat Mount was designed for conservationally-appropriate storage of artifact hats and headgear. It uses a 6-3/4" diameter powder coated steel round base, and a 1" diameter anodized aluminum post, creating an overall height of 8", 11", or 15". A 6-1/2" x 5" semi-sphere of ETHAFOAM®, covered with a polyester stockinette fits atop the post. The Mount requires screwing the post into the base with a single screw (provided), then placing the semi-sphere atop the post. Black, grey, and colored covers available; please call for prices. Volume discounts available.

6012

Display Hat Mount

\$60.



The Display Hat Mount uses the same 6-1/2" x 5" semi-sphere of ETHAFOAM® as the Storage Hat Mount (Catalog #6010), covered with a polyester stockinette, but sits atop a thinner 3/8" diameter anodized aluminum post for a cleaner look when used for display. This mount also uses a 6-3/4" diameter powder coated steel round base. The Mount requires screwing the post onto the base, then placing the semi-sphere atop the post, with an overall height of 16". Black, grey, and colored covers available; please call for prices. Volume discounts are available.

DORFMAN

MUSEUM FIGURES, INC.

6015 **Head Mount, oval head – large, small, or child** **\$125.**



The Head Mount uses our Conservation Head (item #5015), which is mounted on a 6-3/4" diameter powder coated steel round base. This allows the display or storage of headwear alone and can be set in a small case or countertop. Large head measures 22" (hat line circumference) small measures 20", both are 11-1/2" high including base. Child size available. Black, grey, and colored covers available; please call for prices.

6020 **Head Mount with features, multiple iterations** **\$165.**



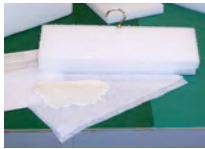
These Head Mounts use our Conservation Heads with Features (item #5020), which are covered with polyester stockinette. They mount on a 6-3/4" diameter powder coated steel round base and are for display or storage of headwear. The male measures 22" hat circumference and the female, 14". Both are under 14" high, including base. Male (244) & Female (092) shown; others available (please call for details). Black, grey, and colored covers available; please call for prices.

6500 **Conservation Hanger** **\$50.**



An aluminum hanger is embedded inside a block of ETHAFOAM®, 15 1/2" across shoulders x 2" thick, front to back. Contemporary shoulder slope. Padded with museum-quality 100% polyester padding, and covered with polyester stockinette. Great for storage or simple display. Comes fully finished, and ready to use.

6600 **Conservation Hanger Kit** **\$30.**



An aluminum hanger is embedded inside a block of ETHAFOAM®, 15 1/2" across shoulders x 5" x 2" thick, front to back. Carve your own shoulder slope angle and shoulder width (down to 12") for your period costumes. Cover with the museum-quality padding and polyester stockinette cover included.

6700 **Conservation Hanger, Carve-Your-Own** **\$15.**



An aluminum hanger is embedded inside a block of ETHAFOAM®, 15 1/2" across shoulders x 5" x 2" thick, front to back. Carve your own shoulder slope angle and shoulder width (down to 12") for your period costumes. Cover with your own materials. (minimum order 5)

Prices subject to change. Please call for quotes.
One-year warranty, parts and labor, for defective materials and workmanship.
Prices F.O.B. Baltimore, MD